

1002000100

## ICX-500

**Intelligent Communication Gateway with HD Voice**

- ✓ Made to provide critical communication in any environment
- ✓ Supports 552 IP stations
- ✓ Environmentally friendly and energy saving - max. 15 W
- ✓ Global networking and integration
- ✓ Dual software images for system robustness and low downtime during software upgrades
- ✓ Secure boot, hardware Root of Trust - RoT
- ✓ High quality professional PA broadcasting and messaging services
- ✓ Security voice guidance for public safety and building security
- ✓ 1U high, fanless design, vibration proof

 UL Certified Intercom  ICX-AlphaCom  HD Voice

## Description

The ICX-500 Intelligent Communication Gateway connects people, devices, and systems at unprecedented levels of manageability, scalability, robustness, and interoperability.

ICX-500 will provide your site with all your communication needs as it is easy to extend in functionality and system size, and is designed to be future-proof. The system can be tailored to support applications of almost unlimited specificity and complexity.

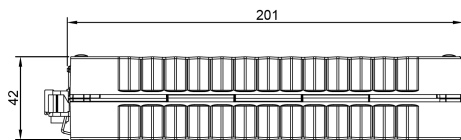
Zenitel's ICX (Intelligent Communications X) implies the deployment of VoIP applications required in critical situations. ICX-500 provides carrier-class system availability and protects resources in an IP environment by using embedded security mechanisms.

The main security mechanisms used are hardware Root of Trust, software integrity check (SHA256), restricted management access, separate management interface, and internal firewall.

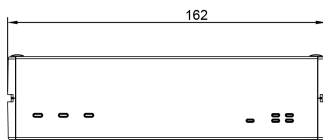
For more information on ICX-500 please see [Zenitel Wiki](#)

## Technical Dimensions

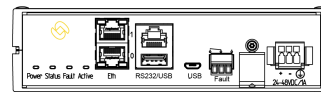
SIDE VIEW



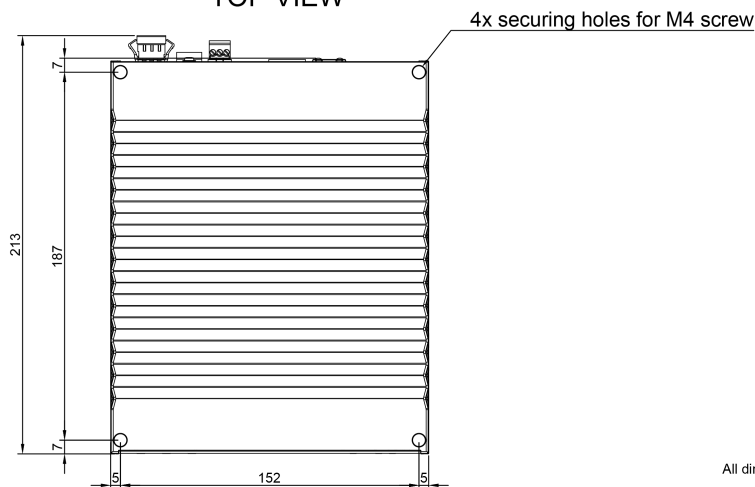
FRONT VIEW



REAR VIEW



TOP VIEW



All dimensions in mm

# Specifications

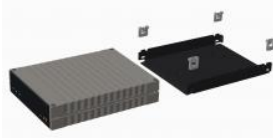
## MECHANICAL & ENVIRONMENTAL

Dimensions (WxHxD)	162 x 44.5 x 200 mm / 6.38 x 1.75 x 7.87 inches
Weight	1 kg / 2.2 lbs
Power	Nominal 24VDC - 48VDC, 15 W (min/max: 20VDC-63VDC)
Mounting	Wallmount or 19" rack
Processor subsystem	NXP LS1043
Storage subsystem	Solid state (1048 MB Flash). MicroSD, USB
Temperature Range	-15°C to +55°C
Relative Humidity	95%

## FEATURES

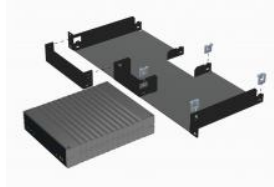
Memory	1048 MB SDRAM, 1048 MB NAND Flash, 128 MB NOR Flash
Subscriber Capacity	552 intercom stations per server
Busy Hour Call	60 000 BHCA
IP Telephones	552 IP telephones per server
Software Integrity Check	SHA256
IP Priority	DiffServ, IP TOS
IP Security	Hardware root of trust, SSH, HTTPS, firewall
SIP	RFC 3261, SIP INFO, RE-Invite. RFC 2833, RFC 4733,
VoIP Internal Networking	64 channels
VoIP External Networking	64 channels
ISDN Trunk	ISDN PRI (30 channels); VoIP external networking + gateway
Analog Trunk	FXO (4 & 8 channels); VoIP external networking + gateway
GSM Trunk	Quad band GSM; VoIP external networking + gateway
Other	Vingtor-Stentofon Data scripting engine (EDIO)
Configuration	AlphaPro over IP, Web
Monitoring and Logging	SNMP trap, SNMP MIB, syslog, Web, e-mail, SQLite
SW Upgrade	System recovery upgrade via SD-card, Web, Automatic upgrade of IP station
VoIP Audio	HD Audio - 16 kHz (background music, see additional information on the Zenitel wiki), HD Voice - G.722 (7 KHz), Telephone Audio - G.711 (3.4 KHz)
Open Duplex Conference	20 open duplex conferences can be configured. A maximum of 16 subscribers can participate in 1 conference but maximum 64 subscribers can participate divided over multiple channels simultaneously.
Push-to-Talk Conference	50 conference channels. Unlimited number of participants. Priority features
Group Call	250 groups. Unlimited number of participants. Priority features
Call Modes	Open mode. Ringing mode. Call request mode. Priority features
Audio Messaging	PA broadcasting. Auto-attendant, Voice guidance (doors, elevators), Security voice response
Compliance	CE, FCC Part 15
Certifications	IEC/UL62368-1, EN61000-6-X, EN60945, EN 50121-4; In order to comply with UL safety requirements, the unit has to be supplied by a power supply specified as a Limited Power Source (LPS) or PS2 (cased on IEC/UL 62368-1 definition) or NEC Class 2 source of supply

## Accessories



IA-MB1

Mounting Bracket for ICX-500



IA-RS1

Rack Shelf for ICX-500 - 19"



IPS-AC1

PSU for ICX-500



PROMAX-120-24

Power supply 100-240VAC/24VDC 5A



Power Supply 100-240VAC/48VDC 2A

## Used With



ICX-AlphaCom Core



ICX-AlphaCom Licenses



ILS-SC, IP-Station License, Softclient

IP Station License for SoftClient



ILI-SIP2 / ILI-SIP4 / ILI-SIP8, SIP Trunking License 2, 4, 8 Lines

SIP Trunking License



ILI-REC(2-32), Active Recording Interface License

Active Recording Interface License



ILI-API64 / ILI-API512, API License (64 and 512 Stations)

API License



ILI-AN2 / ILI-AN8, AlphaNet License (2 Lines and 8 Lines)

AlphaNet License



ILF-M-BAS / ILF-M-ENH / ILF-M-EXT ( Audio Messaging Licenses, Basic and Enhanced)

Audio Messaging Licenses



ILS-IC, IP Station License

IP Station License



ILS-SIP, SIP Station License

SIP Station License